

OPERATOR'S MANUAL







Airway Adapter

YG-211T

0604-904708A

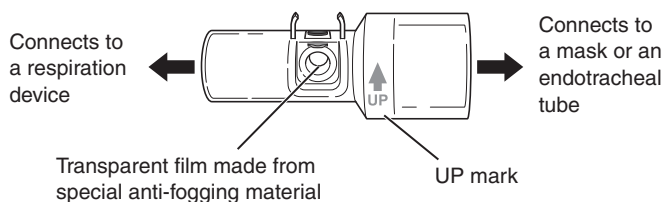
First Edition: 01 Oct 2008

Second Edition: 20 May 2009

	Attention, consult operator's manual		Expiration date
	Year and month of manufacture		The CE mark is a protected conformity mark of the European Community. The products herewith comply with the requirements of the Medical Device Directive 93/42/EEC.
	Lot number		
	Single use only		

General

The YG-211T airway adapter is used with a TG-221T CO₂ sensor of the TG-970P CO₂ sensor kit to measure the partial pressure of the expired CO₂ of the patient.



Dead space volume: 4 mL (for patients more than approximately 7 kg)

This airway adapter can be used with Nihon Kohden monitors which measure the partial pressure of the expired CO₂. Refer to the operator's manual for your Nihon Kohden monitor to check if the YG-211T airway adapter can be used with your Nihon Kohden monitor. Read the operation manuals for the monitor, CO₂ sensor and CO₂ sensor kit together with this manual.

WARNING

When using the airway adapter on patients with low ventilatory amount, due to the airway adapter's dead space volume (4 mL), the CO₂ sensor might have difficulty in detecting no breath. Perform ventilation taking into consideration the 4 mL dead space volume.

CAUTION

The airway adapter is non-sterilized and disposable. Use only for a single patient and single use. Failure to follow this instruction causes cross infection.

CAUTION

Connect the airway adapter to the respiration circuit so that the UP mark on the airway adapter faces upward. Otherwise, water droplets may get into the airway adapter and affect the measurement accuracy.

CAUTION

Failure to follow the instructions below degrades the anti-fogging ability of the transparent film and results in incorrect measurement.

- Replace the airway adapter with a new one every 24 hours.
- Replace the airway adapter with a new one if blood, sputum or mucus adhere to the transparent film.
- Do not damage the transparent film. Do not let dust or detergent contact the transparent film. Do not touch, wipe or clean the transparent film with fingers or cleaners.

CAUTION

United States law restricts this product to sale by or on the order of a physician.

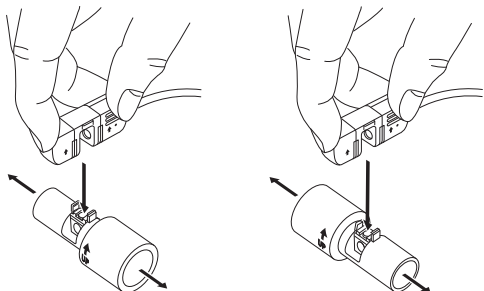
NOTE

- Open the package just before use.
- Do not leave the airway adapter in a place with high temperature such as on a dashboard of a car. This may deform the airway adapter and cause inaccurate measurement.
- Loose or damaged connections may compromise ventilation or result in inaccurate measurements of respiratory gases. Securely connect all components and check the connections regularly.

Replacing the Airway Adapter

Hold the CO₂ sensor as shown and insert the sensor into the airway adapter until it clicks.

Refer to the operator's manual of the CO₂ sensor kit together with this manual.



When removing the airway adapter, hold the CO₂ sensor by the ridges and pull it straight up.

NOTE

Do not pull the CO₂ sensor cable. This may break the cable.

Cleaning and Disinfecting the Airway Adapter

This airway adapter is disposable. You cannot clean or disinfect it. Immediately replace the airway adapter with a new one when it becomes dirty.

Expiration Date of the Airway Adapter

This airway adapter is disposable. The expiration date is 36 months from the date of manufacture.

Disposing of the Airway Adapter

Follow your local laws for disposing of infectious medical waste.

Specifications

Operating Environment

Temperature: 10 to 40°C (50 to 104°F)
Humidity: 30 to 85% (noncondensing)
Atmospheric pressure: 700 to 1060 hPa

Storage Environment

Temperature: -20 to +65°C (-4 to +149°F)
Humidity: 10 to 95%
Atmospheric pressure: 700 to 1060 hPa



Manufacturer

NIHON KOHDEN CORPORATION
1-31-4 Nishiochiai, Shinjuku-ku, Tokyo 161-8560, Japan
Phone +81 (3) 5996-8036 Fax +81 (3) 5996-8100

NIHON KOHDEN AMERICA, INC.
90 Icon Street, Foothill Ranch, CA 92610, USA
Phone +1 (949) 580-1555 Fax +1 (949) 580-1550

EC REP European Representative

NIHON KOHDEN EUROPE GmbH
Raiffeisenstrasse 10, 61191 Rosbach, Germany
Phone +49 6003 827-0 Fax +49 6003 827-599

NIHON KOHDEN TRADING (SHANGHAI) CO., LTD
5F Hui Jin Business Mansion No. 259 Wuzhong Road,
Shanghai 201103, China
Phone +86 (21) 6270-0909 Fax +86 (21) 6270-9700

Options

Description	Model	Q'ty	Code No.
CO ₂ sensor kit	TG-970P	1	P909
CO ₂ adapter	JG-970P	1	K987
CO ₂ sensor	TG-221T	1	P924

- The Japanese manual is published according to guidelines of the Health, Labor and Welfare Ministry in Japan. Content of the English and Japanese manuals may differ.
- The entire contents of this manual are copyrighted by Nihon Kohden. All rights are reserved.