

Incu*j* Tester



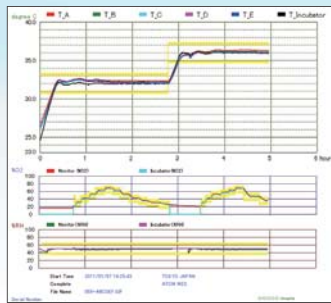
Measurement and data management are performed easily.

The main functions of infant incubator can be checked efficiently and safely.



Improvement of Work Efficiency

- The temperature, oxygen concentration and relative humidity can be checked easily by placing the device on the mattress platform.
- The measurement data can be controlled by your personal computer.
- The setting data of ATOM's infant incubator can be stored in your personal computer (Dual Incu *i* / Incu *i* / V-2200 / V-2100G).



Measurement data (Trend graph)

Improvement of Safety

- The comparative evaluation of temperature, oxygen concentration and relative humidity is possible as well as improving reliability.
- The 5 points of temperature monitoring enables the measurement of consistent and stable temperature environments.
- The black disk enables measurement of the radiation heat of infant warmer.



Measurement by Black Disk

Specifications

Incu <i>i</i> Tester <i>i</i> series incubator / V-2200 / V-2100G / Neo-Servo	
Atom's code	61639
Power requirements	Rating: AC100~240V (0.1A) Frequency: 50/60Hz Power consumption: 10VA
Monitoring range	1. Temperature: 23.0~40.0°C 2. Oxygen concentration: 20.9~65%O ₂ 3. Relative humidity: 5~90%RH (no condensation)
Monitoring period	Selectable from 24minutes, 1,2,6 and 12hours
Accuracy	1. Temperature: ±0.3°C 2. Oxygen concentration: ±2%O ₂ (20.9~25%O ₂) / ±3%O ₂ (25~65%O ₂) 3. Relative humidity: ±5%RH
Dimensions	Tester: 380(W)×210(D)×105(H)mm Carrying case: 500(W)×420(D)×175(H)mm
Weight	Tester: Approx. 0.7kg Carrying case: Approx. 4.5kg (including the Tester and its accessories)
Accessories	COM-1 (USB)H Converter Cable (for the Incu <i>i</i> Tester) ...1 COM-1 (USB)H Converter Cable (for the incubator)1 COM Setup Disk1 V-2100G Conversion Module (for V-2200, V-2100G)1 INCUI Conversion Module (for Dual Incu <i>i</i> , Incu <i>i</i>)1 Installation CD-ROM for the Monitoring Program of the Incu <i>i</i> Tester ...1 Power Adapter1 Black Disk1 Oxygen Sensor1 Operation Manual1

Atom Medical Corporation maintains a continuing product improvement program, and therefore the equipment actually purchased and received may differ in specifications and/or configuration from that shown in the catalog.